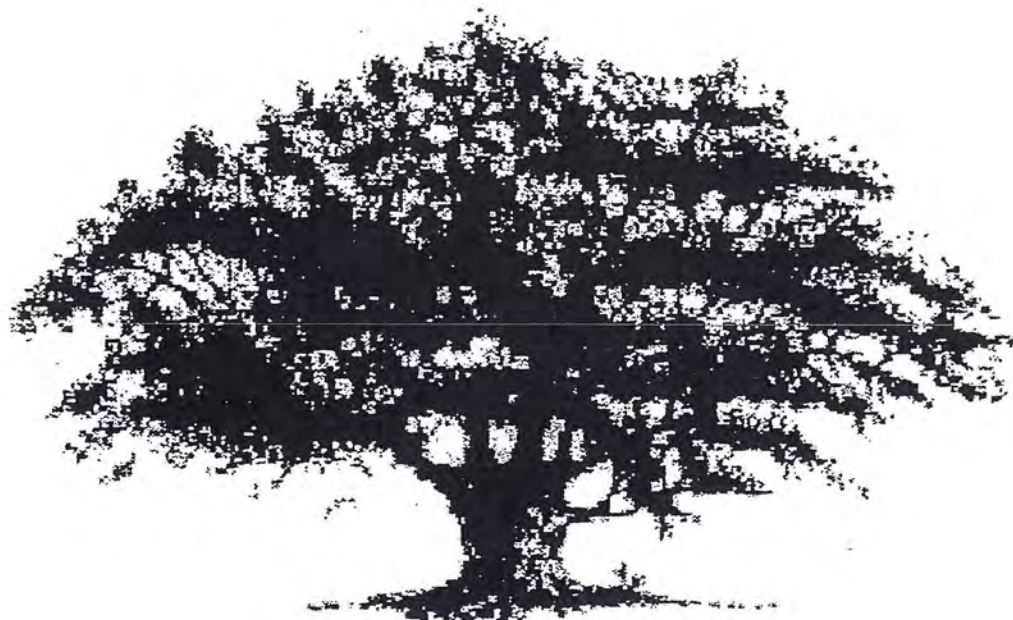


TREE CLIMBER



SMOKY VALLEY GENEALOGICAL SOCIETY AND LIBRARY, INC.

Smoky Hill Museum Building

211 West Iron Avenue

Suite 205

Salina, Kansas 67401

785-825-7573

Library Hours

Monday through Saturday – 12:00 PM to 4:00 PM

www.rootsweb.ancestry.com/~kssvgs/

2016 TREE CLIMBER - ISSUE TWO

INDEX

1. Colored Families of Summit Township	3
2. Civil War Pensioner Still Living	4
3. New FHC Hours & Phone, Interesting Websites, Salina Plat Map	5
4. No More 404's, Addicted to Genealogy, Genealogy Gems	6
5. Salina Light, Power, & Gas Company - 1910	7
6. 5th Annual Salina Light, Power & Gas Co. Banquet - 1912	8
7. Employees Salina Light, Power & Gas - 1912 1894 Salina Fire	9
8. Salina Public Library Genealogy Club Meetings	10

September SVGS Monthly Meeting

Dear Friends,

It's that time of year when SVGS begins its monthly meetings. For those of you who may be new to SVGS, our meetings are held on the 2nd Saturday of each month from September thru May.

Our September meeting will on Saturday, September 10th and will begin at 2 p.m. in the Community Room of the Smoky Hill Museum.

Lorna Nelson and Lenora Lynam with the Old Mill Museum in Lindsborg, KS will present our program. For those of you who have Swedish roots, this is the opportunity to get some of your research questions answered. They will also be promoting their October genealogy workshop.

Please mark your calendars and join us on September 10th. Refreshments will be served.

Mary Jane McIntire, Pres. SVGS

THE COLORED FAMILIES OF SUMMIT TOWNSHIP, SALINE COUNTY, KANSAS

BY: Kathy McCullough

In the 1880's about four miles west of Falun on the land which is now part of the Smoky Hill Weapons Range, lived a settlement of colored families.

Why did this group come to Kansas and why did they settle in this particular place? The foremost reason was slavery. The colored families migrating into "Free Kansas" after the Civil War, were advised to go into the country where their wives and children need not be servants. Perhaps chances were better for a new way of life in the new state. Good land could be bought in Kansas for as little as three to five dollars an acre while in Kentucky, it might cost as much as fifty to one hundred dollars an acre.

The land in most of Summit Township is rocky and hilly and was used almost exclusively for pasture land. The colored families lived on approximately three sections of the township. They kept pasture land and harvested wheat for themselves and their neighbors, owned livestock - - hogs, cattle, chickens, and kept large gardens. Some colored folks learned to speak Swedish from their Swedish neighbors. Their children attended District 67 grade school along with white children. At one time, the school had a young Negro woman teacher from Salina - Miss Saunders.

Reportedly, the first African American settling in Saline County was Larry Lapsley who came from Kentucky in 1865 and lived in Liberty Township.....east of the Weapons Range. More African Americans came to central Kansas in the late 1870's. Some were part of the organized Exoduster Movement to Kansas. A few colored family names were Price, Green, Hensley, Hurston, Maxey, Clark, Calloway, and Smith.

One prominent family was Henry Green. Henry was a striking man with a long white beard. Henry was born a slave in Kentucky on 16 Mar. 1833 and served as a private in Company A of the 13th Regiment of the United States Colored Heavy Artillery of the Union during the Civil War at Camp Nelson, Kentucky. He was married twice and had a large family of 12 - 15 children. The children who were born in Kansas stayed in the Saline county area and some are buried in Gypsum Hill Cemetery. Henry is buried in the Hurston Cemetery west of Falun on the Weapons Range. Henry owned 160 acres in Summit Township and in the 1903 plat book was listed as a farmer and stock raiser.

Descendants of the above families remained in the area for over 60 years until the establishment of Camp Phillips in the early 1940's. The lives of these families dramatically changed in 1942 with the announcement that the government needed their farms for the construction of Camp Phillips and the land was sold. Those who remained in the settlement eventually moved elsewhere.



Hurston Cemetery, Smoky Hill Weapons Range

Civil War Pensioner Still Living

Complete story published in
US News & World Report
By: Curt Mills, Staff Writer
8 August 2016

The Civil War ended 150 years ago, but the United States government is still paying a veteran's pension from that conflict.

The 86 year old daughter, Irene Triplett, of Civil War veteran, Moses Triplett, collects \$73.13 per month.

Moses Triplett was born in 1846. He first joined the confederate Army in 1862. He deserted and signed up for the Union Army. His first wife died and they had no children. He later re-married a woman, Elda Hall, who was 50 years his junior. They had 5 children. Three children died in infancy, and Irene, and her brother, Everette, grew to adulthood.

Moses Triplett died in 1938. His widow, Elda Triplett, died in 1967. His son, Everette, died in 1996. That leaves Irene Triplett as the only surviving child of a Civil War veteran to still draw a pension.

U.S. Veterans and dependents on Benefit Rolls as of May 2016

	VETERANS	CHILDREN	PARENTS	SURVIVING SPOUSES
Civil War		1		
Spanish-American War		46		42
Mexican Border		3		6
World War I		1,590		1,236
World War II	144,938	9,360	10	178,251
Philippines	1,776	155	3	2,598
Korean Conflict	181,893	2,207	25	74,041
Vietnam Era	1,525,400	4,570	1,109	251,543
Gulf War	1,990,094	4,488	1,788	26,799
Peacetime	710,773	1,382	713	30,048
Non Service Connected	292,297	10,175		193,442
Service-Connected	4,262,577	13,627	3,737	377,122

New Family History Center Hours & Phone Number

**Salina Family History Center
845 S. Ohio
Salina, KS 67401**

**FHC Phone #785-827-2392
Center Director Phone #785-825-0729
Email: [KS\(underscore\)Salina@ldsmail.net](mailto:KS(underscore)Salina@ldsmail.net)**

HOURS

**Tuesday: 7:00 p.m. - 9:00 p.m. (1st-2nd-3rd Tuesday of each month)
Wednesday: 7:00 p.m. - 8:30 p.m.
Thursday: 9:00 a.m. - 3:00 p.m.
Thursday: 7:00 p.m. - 9:00 p.m. (2nd Thursday of each month)
Saturday: Afternoon by appointment only**

If the weather is bad, it would be wise to call ahead to make sure that the FHC is open.

Some Interesting Websites

RoadsideAmerica.com is a fun way to find attractions and oddities all across America. When you are planning your next roadtrip, be sure to check this website.

https://en.wikipedia.org/wiki/Wikipedia:List_of_online_newspaper_archives

This website includes links to both free and pay-to-view newspapers. They include not only the United States, but many foreign countries.

<http://peakery.com/united-states-mountains>

This website includes 67,295 peaks in the United States. It lists Kansas with 136 peaks. You can search by state and in many instances see a photo of various mountain peaks.

Plat Map of City of Salina

Recently, SVGS received a donation of a color copy of the 1887 Plat Map of the City of Salina. We have had the map framed and it is available to see in our reception area. It shows a race track in the Oakdale Park area. It also shows the college at the west end of Iron Street. It is very interesting and has created a lot of talk by all who have seen it. Be sure and stop by and take a peek!

No More 404's

Those who use a computer, can relate to that heart sinking disappointment of getting a "404 error" when trying to connect with a web page. Now, there is hope that you can find an archived copy of the pages you are looking for.

waybackmachine is part of Internet Archives. All you need to do is "copy and paste" the broken link into the **waybackmachine**. It will search the history of over 502 billion pages on the internet.

The Internet Archive has a large assortment of free books, movies, music, etc. The web address is:

<https://archive.org>

YOU KNOW YOU'RE AN ADDICTED GENEALOGIST

- ...when you brake for libraries.
- ...if you get locked in a library overnight and you never even notice.
 - ...when you hyperventilate at the sight of an old cemetery.
 - ...if you'd rather browse in a cemetery than a shopping mall.
- ...when you think every home should have a microfilm reader.
 - ...if you'd rather read census schedules than a good book.
 - ...when you know every town clerk in your state by name.
 - ...if town clerks lock the doors when they see you coming.
- ...when you're more interested in what happened in 1697 than 1997.
- ...if you store your clothes under the bed and your closet is carefully stacked with notebooks and journals.
- ...if you can pinpoint Harrietsham, Hawkhurst, and Kent on a map of England, but can't locate Ames, Iowa.
 - ...when all your correspondence begins, "Dear Cousin,"
- ...if you've traced every one of your ancestral lines back to Adam and Eve, have it all fully documented, and still don't want to quit.

Genealogy Gems

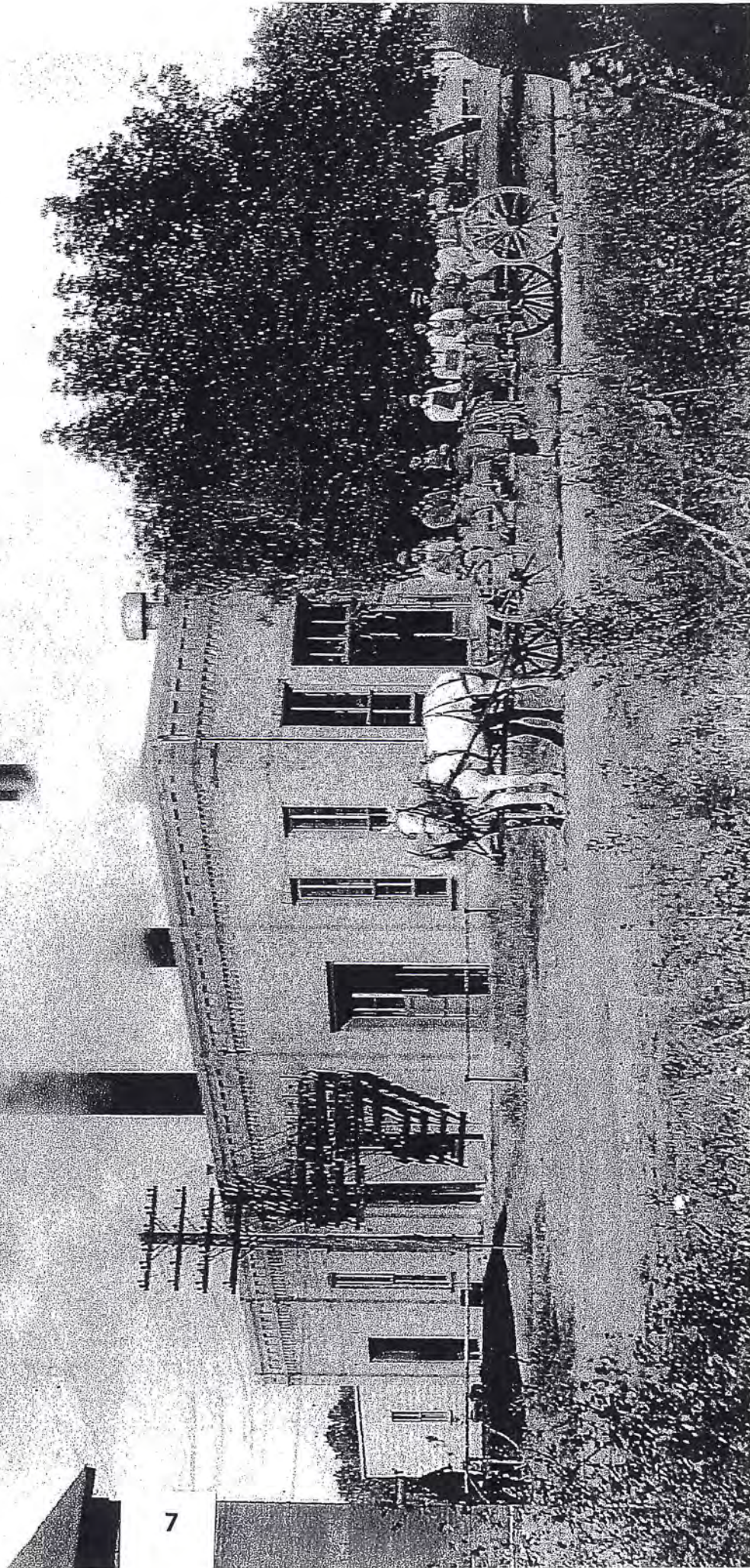
If you don't want your descendants to put a twisted spin on your life story, write it yourself!

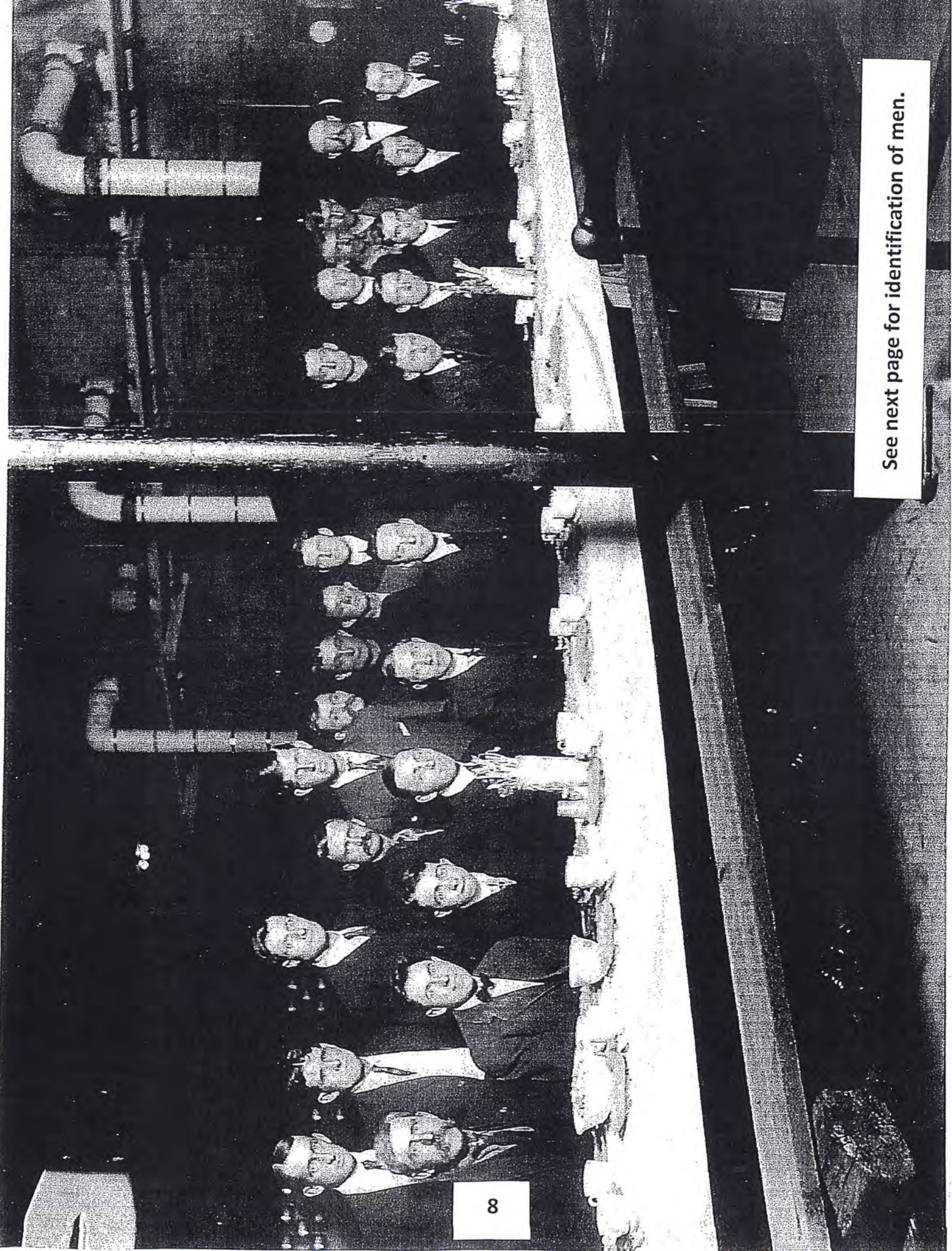
Remember that when a family member passes away, they take a library of memories with them. It's a genealogist's duty to record them before that happens.

Heredity might be better spelled as heir-edity.

Salina Light, Power, & Gas Company
October 1910

Geo. Harris, Garret Blue, Raymond Miller,
Wm. Stroh, Bert Sherwood, Jesse Arnold,
L.R. Conn, John Peck, Robert Roberts





See next page for identification of men.

5th Annual Banquet given to employees by the Salina Light, Power & Gas Company in the generator room at the company plant located on North 3rd Street, Salina, KS. -- 1912

Standing

Ollie Bassett
C. Fuller
B. E. Jack
Wm. Bassett
Jesse Arnold
F. Laggerman
J. A. Shanks
R. H. Flick
M. L. Beighly
G. G. Waggoner
Norton Weberg
C. W. McBride, Chief Eng.

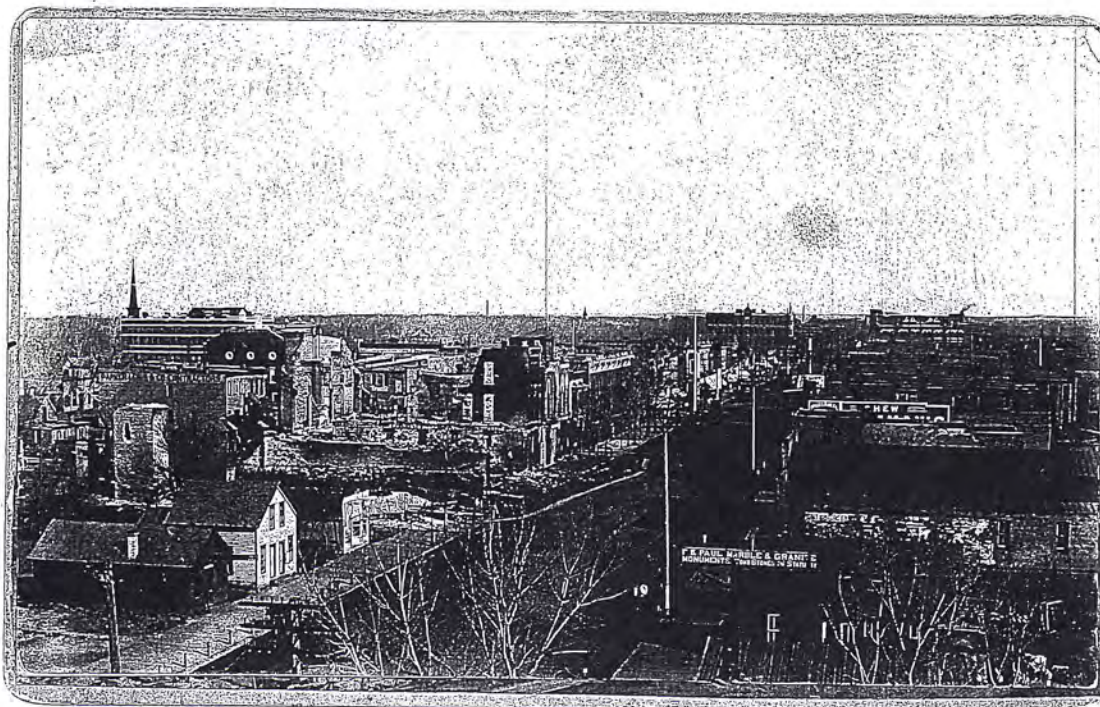
Seated

F. C. Bowers
J. E. Morison
Clark Davis
J. L. Thompson
J. E. Harsh, Gen. Mgr.
Ed Wuerth
T. C. Bull
J. C. York
W. R. Waggoner, Gen. Sept.
E. L. Franklin
P. N. Camp

1894 Fire Destruction

Written on the back of the photo is "Fire 1894 Destruction of Moser Block, Grier Block, Masonic Temple and Annex". At that time, the Masonic Temple was located on the west side of Santa Fe between Iron and Walnut at 122 S. Santa Fe.

The large steeple on the upper left of the photo belonged to the Methodist Episcopal Church located at 122 N. 8th.





Genealogy Club

Salina Public Library's Genealogy Club meets on the third Thursday of the month from August-November and January-May. Each month a speaker will give information on a subject of interest to genealogists. No registration is required, and if you show up, you are automatically a member of the club!

For more information,
please contact:
Barbara Mulvihill
Information Services Librarian
at (785) 825-4624
or bmulvihill@salpublib.org.



SALINA PUBLIC LIBRARY
your connection to the past →

Fall 2016

Thurs., Aug. 18, 6:30 p.m., Michelle Enke, Local History Librarian at Wichita Public Library will speak on Civil War genealogy.

Thurs., Sept. 15, 6:30 p.m., Barbara Mulvihill will share with you information on Genetic Genealogy that she learned by taking an online course through the National Genealogy Society.

Thurs., Oct. 20, 6:30 p.m., Sherri Camp, Genealogy Librarian at Topeka and Shawnee County Public Library will speak to us on African-American genealogy.

Thurs., Nov. 17, 6:30 p.m., Mary Douglass will speak on The Five Maps Every Genealogist Needs.

Meetings are held in the library's Prescott Room. They are free and open to the public. No registration is required.

Salina Public Library
301 W. Elm
Salina, KS 67401
(785) 825-4624
www.salinapubliclibrary.org

