

TREE CLIMBER



SMOKY VALLEY GENEALOGICAL SOCIETY AND LIBRARY, INC.

Smoky Hill Museum Building

211 West Iron Avenue

Suite 205

Salina, Kansas 67401

785-825-7573

Library Hours

Tuesday through Saturday – 12:00 p.m. To 4:00 p.m.

www.rootsweb.ancestry.com/~kssvgs

2017 Tree Climber – Issue One

Index

1. Meeting Dates & President's Message	2
2. Recipe Requests & Relative Count Chart	3 - 4
3. I Keep Getting Notifications from DNA Relatives	5
4. KS Veterans – Historical Records Research Service	6
5. Saline County Criminal Court Case Index	7 – 10

Monthly Meeting Dates: Meetings are held the second Saturday of each month, September thru May, at 2 p.m. In the Community Room (#208) of the Smoky Hill Museum.

President's Message

Dear Friends,

As much as it hurts me to say this, SVGS is not off to a great year. We sent our first membership renewal form in November, then sent another in December. A third notice via mail (with a SASE included) was sent the first of February. For whatever reason, to date, only half of last year's members have paid their dues. We are well aware that our membership is aging. We have had several members move out of town, several passed away, and some members have health issues that prevent them from renewing. We are not attracting the younger population, yet genealogy is the number one hobby in the United States.

Your SVGS Board members have discussed this issue more than once. We are running out of ideas.....ways to increase memberships, ways to stay relevant with our website, ways to attract younger members, and even running out of program ideas.

Ten years ago, we had a membership of almost 200. Last year, our membership was 67. Our dues pays the costs of our copier maintenance, phone and internet service, and program expenses. Dues and donations are our sole income.

We are open to ideas! Please let us know your thoughts.

**Mary Jane McIntire,
Pres. SVGS**

Recipe Requests

Following our annual Christmas Potluck Dinner, I had more than one request for several recipes. Of course, I have a case of "Sometime's Disease" (at least it's not "All-the-Timer's") and can't remember who those people were who asked for them. I decided the best thing to do was include them in the *Tree Climber* for all to enjoy!

Clouds at Sunrise Dessert

Janet Laubhan Flickinger

6 egg whites	$\frac{3}{4}$ cup chopped nuts (optional)
$\frac{3}{4}$ tsp. Cream of tartar	2 tsp. Vanilla
2 cups sugar	8 oz. Cool Whip
2 cups crushed soda crackers	1 can cherry pie filling

Preheat oven to 350 degrees. Beat egg whites until frothy; add cream of tartar & continue beating until stiff. Add sugar, crackers, vanilla and mix well. Pour into a greased pan & bake about 15 minutes. Cool crust and top with cherries & dollops of whipped cream.

Spinach Salad

Nanc Scholl

Salad:

7 slices cooked, crumbled bacon	2 hard cooked eggs
1 16 oz., well drained bean sprouts	2 bundles (10 oz) spinach, washed & drained

Dressing:

1 cup salad oil	$\frac{1}{4}$ cup white vinegar
2 T. Worcestershire Sauce	$\frac{1}{2}$ cup sugar
$\frac{1}{3}$ c. ketchup	1 small onion, chopped fine

Put dressing ingredients in a jar and shake until well mixed and dissolved.

Toss spinach, bean sprouts, 1 $\frac{1}{2}$ eggs, 6 slices of bacon. Pour dressing over about 1 hour before serving. Top with 1 slice crumbled bacon and the remaining $\frac{1}{2}$ egg.

Grape Salad
Kathy McCullough

2 lbs red seedless grapes	2 lbs green seedless grapes
1 (8 oz) cream cheese, softened	1 cup sour cream
½ cup sugar	1 tsp. Vanilla
1 c. chopped walnuts or pecans	½ c. brown sugar
8 oz. sharp cheddar cheese	

Note: This makes a large batch. I use 2 lbs. green grapes and cut the cream cheese and sour cream in half. If the grapes are huge, I cut them in half.

Rinse grapes and pat dry. In large bowl, mix softened cream cheese, sour cream, white sugar, nuts and vanilla. Add grapes to cream cheese mixture.

Cover and refrigerate until ready to serve.

Sprinkle the brown sugar over the salad right before serving.

So Much To Do, So Little Time!

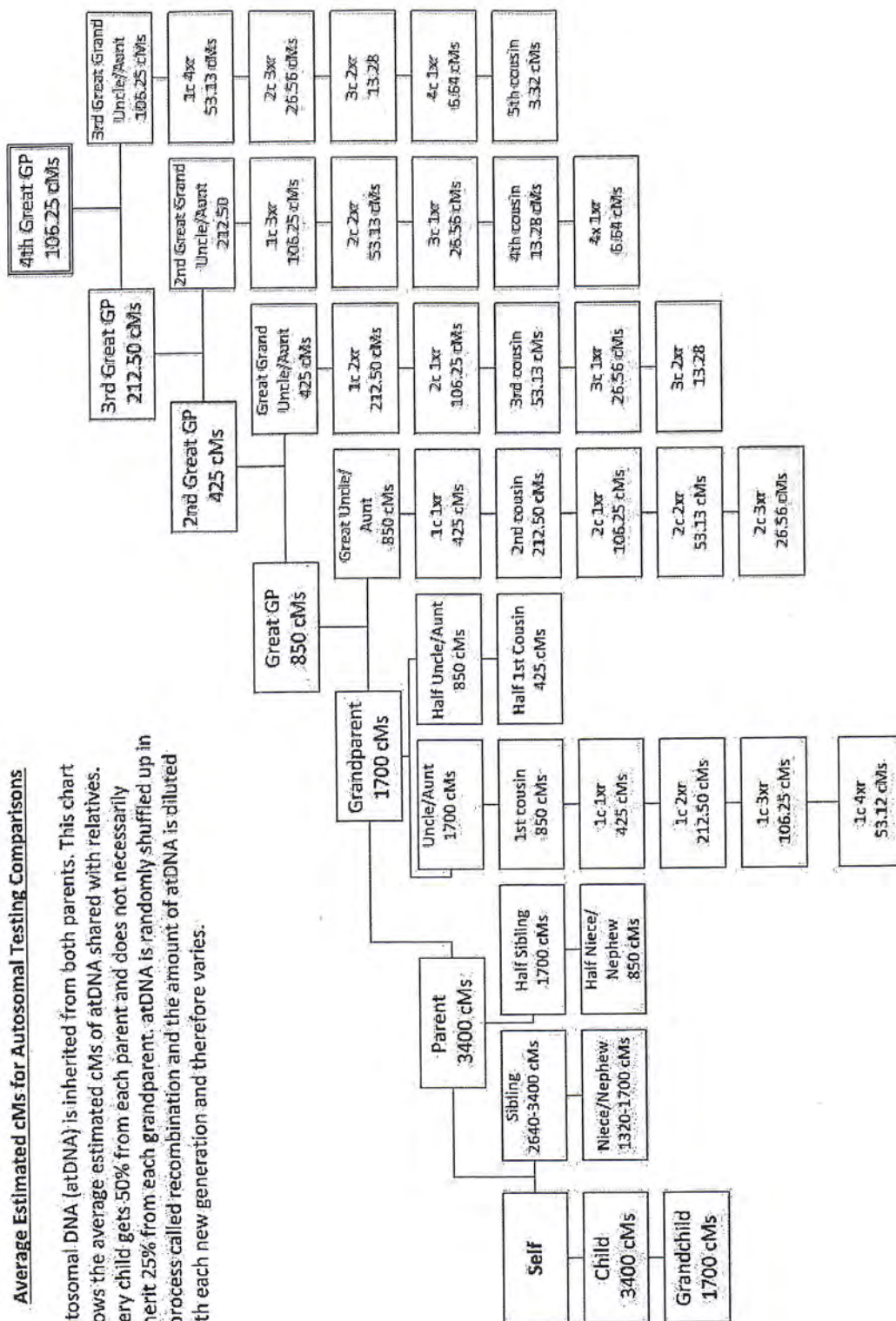
YOU
2 parents
4 grandparents
8 gr grandparents
16 gg grandparents
32 ggg grandparents
64 gggg grandparents
128 ggggg grandparents
256 gggggg grandparents
512 ggggggg grandparents
1,024 gggggggg grandparents
2,048 ggggggggg grandparents
4,096 gggggggggg grandparents
8,192 ggggggggggg grandparents
16,384 gggggggggggg grandparents
32,768 ggggggggggggg grandparents
65,536 gggggggggggggg grandparents
131,072 ggggggggggggggg grandparents
262,144 gggggggggggggggg grandparents
524,288 gggggggggggggggg grandparents
1,048,576 ggggggggggggggggg grandparents
2,097,152 gggggggggggggggggg grandparents
4,194,304 gggggggggggggggggg grandparents
You have a lot of work to do.

I Keep Getting Notifications From My DNA Testing Company That I Have New Relatives

I don't know about you, but I keep getting notifications that I have new relatives from the company that I did my DNA testing thru. All of the DNA testing companies do this, but when it comes right down to the nitty gritty, we're most interested in those with a relatively "close" connection. So, what is "close"? I found this little chart to be most helpful.

Average Estimated cMs for Autosomal Testing Comparisons

Autosomal DNA (atDNA) is inherited from both parents. This chart shows the average estimated cMs of atDNA shared with relatives. Every child gets 50% from each parent and does not necessarily inherit 25% from each grandparent. atDNA is randomly shuffled up in a process called recombination and the amount of atDNA is diluted with each new generation and therefore varies.



From the Smoky Valley Genealogical Society Mailbag

SVGS received this email on January 28, 2017 concerning Kansas veterans historical records research and we wanted to pass it on to our membership. I have not tried using their service yet, but am considering it. My father served in WWII and when I sent for copies of his military file (way back when.....), I received the standard "all records were burned in the St. Louis fire" response. I would be curious to see if this company could locate other records about my father's military service. - MJM

On Monday, January 23, 2017 8:59 PM, Golden Arrow Research <geoff.gentilini@goldenarrowresearch.com> wrote:

Hello! My name is Geoff Gentilini and I am the founder of Golden Arrow Military Research. Our research organization provides access to historical military records housed at the National Archives, including official military service records of individual U.S. veterans.

Our Services

The 1973 fire at the National Archives destroyed the vast majority of WWI and WWII Army service files. Using alternate resources housed at the National Archives, we have designed a unique technique for reconstructing the service history of individual veterans whose records were lost in the fire. This includes: muster rolls, morning reports, daily reports of changes, sick rolls, pension files, award cards, medal citations, burial files, individual deceased personnel files, medical extracts, after action reports, pilot flight records, deck logs, operational maps, and many other records. Our experienced researchers can create a custom research package based on the circumstances surrounding the military service of your individual veteran. Additionally, we offer digital scans of original archived records so that you can view your veteran's original documents, including complete military personnel records and photographs, exactly as they appear in their original form at the National Archives. Bringing all of these resources together enables us to provide descendants of veterans with an idea of what their individual veteran experienced during the war. Our clients can enjoy the thrill of viewing their ancestor's military records without having to travel across the country or navigate the often confounding archives ordering process.

Our expert researchers are physically on-site at several National Archive facilities across the country, including St. Louis and College Park. We work only with the original records that are maintained at these archival facilities. None of these records, which are physically housed at the National Archives, can be found on the internet. We take the guesswork out of which records you should request when researching your individual veteran, and we can put together a comprehensive research package often at a lower cost, and in a fraction of the time it would take you to order these records directly from the archival facilities where they are stored.

The process

We locate your veteran's military service records in person at the U.S. National Archives and then scan the entire record, page by page. Most military service records are ready within 1-2 weeks. Once we have your veteran's military service record scanned we send an invoice to your email address. You can pay the invoice securely using a credit/debit card or Paypal if you prefer. Once the invoice is paid the scanned service records are sent right to your email address. Our service is simple, convenient, and fast.

Please visit our website where you can view examples of service records and operational reports we have scanned for past clients. You can view those here: [Golden Arrow Military Research](http://www.goldenarrowresearch.com)

Also, please visit our Facebook page where you can see what previous clients have to say about the work we are doing: [Golden Arrow Facebook](https://www.facebook.com/goldenarrowresearch)

If you think that your visitors could benefit from the unique services that we offer, please consider linking to our website and liking our Facebook page.

Thanks for your time,

--

Geoff Gentilini
Lead Researcher
Golden Arrow Military Research
www.goldenarrowresearch.com
[Like us on Facebook](#)

If you are part of a social network, forum, or online group please let others know about the service we provide!

Saline County, Kansas Criminal Court Case Index

Most people are unaware that SVGS is the home for the early, original Saline County, KS Criminal Case files. This index is in order by date and case file number. If you see a file that interests you, please let the librarian know. Our researcher will have to pull the file.

Date Filed	Surname	First Name	Case #
23 Aug. 1866	Carr	E.V.	1
24 Aug. 1866	Bancroft & Carr		2
7 Jan. 1867	Franke	Conrad	5
4 Mar. 1867	Barrett	Patrick	7
16 Mar. 1867	Rice	D.K.	8
30 Mar. 1867	Harmejo & etal		9
30 Sept. 1867	Carpenter	John	10
30 Sept. 1867	Logan	John	11
14 Oct. 1867	Wheeler	Joseph	12
14 Oct. 1867	Goodard	Cyrus	13
14 Oct. 1867	Carroll	Thomas	14
14 Oct. 1867	Wisner	J.H.	15
14 Oct. 1867	Palmer	Joseph	16
14 Oct. 1867	Roach	John	17
14 Oct. 1867	O'Dell	Jack	18
29 Oct. 1867	Kelser & etal		19
16 Oct. 1867	Cunningham	Edwin	20
18 Oct. 1867	Farrell & Farrell		21
18 Oct. 1867	Agen & McGowen		22
19 Oct. 1867	Dougherty	S.	23
21 Oct. 1867	Dalton	William	24
28 Oct. 1867	Irwin	Irene	25
28 Oct. 1867	Scherberger	Joseph	26
29 Oct. 1867	Dell	George H.	28
6 Jan 1868	Oram	James F.	30
28 Mar. 1868	Cutler	Cyrus M.	31
28 Mar. 1868	Wicks	Gard B.	32
26 Mar. 1868	Smith	Charles	34
26 Mar. 1868	Ware	William	36
20 Sept. 1868	Thayer	C.C.	37
22 Sept. 1868	Mack	James	38
28 Sept. 1868	Minervy	John	39
30 Jan. 1869	Richter	August	41
12 Mar. 1869	Carter	Charles	42
16 Mar. 1869	Hunter	Edward	43
17 Mar. 1869	Parsons & etal	Sam'l E.	44
17 Mar. 1869	Wickersham	James	45
24 Apr. 1869	Sample	Thomas	46
3 May 1869	Tobin	James	47
18 Aug. 1869	Dengel & Anderson		48
30 Aug. 1869	Anderson & etal	Catharine E.	49
30 Aug. 1869	Bernts	Julius	50
7 Sept. 1869	Lyden	John	51
28 Sept. 1869	Davenport	Harry	52
15 Nov. 1869	Ahlquist	A.P.	53
3 Dec. 1869	Haley	James	54
4 Dec. 1869	Healy	John	55
6 Dec. 1869	Johnson	Samuel	56
11 Jan. 1870	Brandon	Charles D.	57
13 Jan. 1870	Walcott	Addison B.	58
19 Nov. 1869	Kelly	James	59

Saline County, Kansas Criminal Court Case Index

9 Feb. 1870	Coplen	Frank	60
9 Feb. 1870	McReynolds	John W.	61
18 Feb. 1870	Anderson	Mrs.	62
25 Feb. 1870	Osborn	Hugh	63
4 Mar. 1870	Halley	E.R.	64
9 Apr. 1870	Light & Light		65
2 May 1870	Veltman	Arnold	66
9 Apr. 1870	Holmburg	Leonard N.	67
9 Apr. 1870	Clarey	Patrick	68
9 Apr. 1870	Falley	E.R.	69
9 Apr. 1870	Holmburg	Leonard N.	70
9 Apr. 1870	Holmburg	Leonard N.	71
9 Apr. 1870	Holmburg	Leonard N.	72
9 Apr. 1870	Harper & Harper		73
9 Apr. 1870	Alley	Napoleon B.	74
9 Apr. 1870	Veltman	Arnold	75
9 Apr. 1870	Berry	William	76
9 Apr. 1870	Simpson	Thomas	77
27 June 1870	Carlgen	A.B.	78
27 May 1870	Parker	C.W.	79
2 Jan. 1870	Wells	Benjamin	80
15 Jan. 1870	Goeman	Louis	81
7 July 1870	Winsett	Samuel	82
4 Aug. 1870	Light	Erander	83
31 Aug. 1870	Sample	Albert	84
3 Aug. 1870	Sample	Albert	85
13 Sept. 1870	Bonney	Seth	86
24 Sept. 1870	McPhail	John	87
24 Sept. 1870	McPhail	John	88
3 Oct. 1870	Hubbard	Ezra	89
20 Dec. 1870	Johnson	Charles	90
23 Dec. 1870	McPhail	Alexander	91
23 Dec. 1870	McPhail	Duncan	92
7 Feb. 1871	Holmquist	Chas.	93
14 Mar. 1871	Roggendorp	Anna	95
22 Mar. 1871	Jennerson	Charles Edward	96
7 June 1871	Truby & Dalton	Oliver & Wm.	97
17 Aug. 1871	Pfifer	Philip	98
19 Aug. 1871	Neland	John	99
19 Aug. 1871	Ireland	James	100
1 Sept. 1871	Wolf	George N.	101
23 Sept. 1871	Hadley	George	102
30 Sept. 1871	Keyes	Seth C.	103
25 Sept. 1871	Johnson	Oliver	103
14 Nov. 1871	Estel	John	105
18 Nov. 1871	Sullivan	Isaac	106
23 Nov. 1872	Sebring	William	107
19 Mar. 1872	Dugan	Charles	108
19 Mar. 1872	Mullen	William	109
19 Mar. 1872	Nuse	John	110
19 Mar. 1872	Smith	Allen	111
19 Mar. 1871	Woodley & Domingo	F.	112

Saline County, Kansas Criminal Court Case Index

19 Mar. 1872	Schrack	Michael	113
19 Mar. 1872	Parker	Edward	114
27 Mar. 1872	Chissel	Eliza	115
28 Mar. 1872	Harvey & Hoagkinson	Henry & William	116
9 Apr. 1872	Mohler	J.G.	121
23 Apr. 1872	Anderson	W.N.	122
3 June 1872	Woodside	Hugh J.	123
4 June 1872	Craig & etal		124
10 June 1872	Freese	George	125
23 Aug. 1872	Kingsbury & etal	Geo. G.	126
8 Oct. 1872	Williams	John	127
8 Nov. 1872	Gerard	Calvin	128
20 Nov. 1872	Patrick	James	129
10 Mar. 1873	Giersch	Peter	130
29 Apr. 1873	Parker	Edward	131
12 May 1873	Johnson	J.L.	132
13 June 1873	Ayers	E.W.	133
28 July 1873	King	John A.	134
15 Aug. 1873	Malone	Peter	135
24 Sept. 1873	Simmons	Hugh	136
25 Sept. 1873	Jennerson	W.D.	137
14 Oct. 1873	Dumprope	Henry	138
14 Oct. 1873	Dumprope	Henry	139
14 Oct. 1873	Simmons	Hugh	140
16 Oct. 1873	Smith	Wm.	141
16 Oct. 1873	Cryderman	Joseph	142
21 Oct. 1873	Curtiss	Wm. H.	143
27 Oct. 1873	Hessler	Kilian	144
2 Nov. 1873	Cutler	Abram	146
20 Feb. 1874	Lockhart	Arthur P.	147
4 Mar. 1874	Stevens	Wm.	148
6 Apr. 1874	Wendell	Louis	149
13 May 1874	Kesler & etal	Willis	150
22 May 1874	Seitz	Oscar	151
1 June 1874	Craig	John	152
5 Jan. 1874	Ryan	John	153
9 June 1874	Doyle	John	154
9 June 1874	Davis & etal	Hy	155
11 June 1874	Kessler	Willis	156
10 July 1874	Beardsley	Seth M.	157
14 July 1874	Parker	W.R.	158
14 July 1874	Parker	W.R.	159
17 July 1874	Munn & etal	Henry	160
7 Aug. 1874	Hardy	Lewis	161
18 Sept. 1874	Sheldon	Henry G.	162
19 Oct. 1874	Porter	John	163
19 Oct. 1874	Robertson	David	164
21 Oct. 1874	Johnson	Wm.	165
26 Oct. 1874	LeFormer	Chas.	166
11 Nov. 1874	Bohan	Barney	167
11 Nov. 1874	Bohan	Barney	168
13 Nov. 1874	Bonney	Seth C.	169

Saline County, Kansas Criminal Court Case Index

27 Nov. 1874	Lossen	Fred	170
4 Jan. 1875	Hinkley	Frederich	171
16 Jan. 1875	Smith	Edney	172
27 Apr. 1875	Godfry	Sanford S.	173
14 May 1875	Farrell	Roger	174
22 May 1875	Donegan	Daniel F.	175
22 May 1875	Shelton	Charles	176
19 Oct. 1875	Simmons	Hugh S.	178
19 Oct. 1875	Simmons	Freemont	179
3 Nov. 1875	Commerford	James	180
15 Dec. 1875	Begley	Mary	181
26 Jan. 1876	Wagstaff	Daniel	182
17 Feb. 1876	Persinger	Abraham	183
24 Apr. 1876	Curtiss	Elias	185
12 Sept. 1877	Gleason	Phillip	186
12 Sept. 1877	Davis	Hiram	187
12 Sept. 1877	Davis	Frank	188
24 Oct. 1877	Williams	Arthur	189
31 Oct. 1877	Clark	John	190
22 Nov. 1877	True	John B.	191
12 Dec. 1877	Brown	Samuel	192
21 Dec. 1873	O'Brien	John	193
8 Mar. 1878	Lattin	H.G.	194
5 Apr. 1878	Carlton	Elmer	195
5 Apr. 1878	Donegan	Daniel	196
13 June 1878	Dunbar	F.W.	197
18 Sept. 1878	Roller	Albert	198
18 Sept. 1878	Grant	Frances	199
19 Sept. 1878	Rollen	Albert	200
9 Nov. 1878	Clark		201
11 Nov. 1878	Seal	Edward	202
12 Nov. 1878	Colvin	James	203
22 Nov. 1878	Combs	James	204
30 Nov. 1878	Sweetland & Meade	Henry & John F.	205
21 Mar. 1879	Brown	C.W.	206
22 Mar. 1879	Fayette & Noggles	Henry & John F.	207
24 Apr. 1879	Jones	James	208
3 Apr. 1879	Strickler	T.H.	209
8 Apr. 1879	King	Mary Ann	210
18 Apr. 1879	Martin & Eberling	Jesse	212
3 May 1879	Cole	Anderson	213
16 Aug. 1879	Derr & etal	Joseph	214
31 Oct. 1879	Bates & Criswell	Samuel & Jerome B.	215
31 Oct. 1879	Corcoran	M.H.	216
28 Sept. 1868	Hiller	C.A.	216
28 Sept. 1868	Haley & Haley		217
30 Oct. 1879	Kelley	John	217
10 Nov. 1879	Walker	William	218
21 Nov. 1879	Scott	Henrietta	219
21 Nov. 1879	Sanders	Jennie	220
21 Nov. 1879	Davidson	Anna	221
21 Nov. 1879	Warren	Lottie	222

To Be Continued